

ADDENDUM NO. 3

Project: Missoula Garden City Compost Improvements Project

Owner: City of Missoula, Montana
1345 W. Broadway
Missoula, MT 59820

Engineer: Anderson-Montgomery Consulting Engineers
1064 N. Warren
Helena, MT 59802
(406) 459-8463 – Paul Montgomery, P.E.

Date of Addendum: March 11, 2025

Bid Opening Date: Original: March 14, 2025

To be amended to March 21, 2025 with this Addendum

The following corrections, clarifications, and/or alterations to the project documents for the project are as such a part and parcel of said plans and specifications as if included therein.

TECHNICAL SPECIFICATIONS: (Removed language shall be ~~stricken~~ and new language shall be ***bold italics***.)

1. Section 00 11 16 – INVITATION TO BID

Notice is hereby given that electronic Bids for the *Garden City Compost Facility Improvements Project - 2025* will be received via *QuestCDN* by the City of Missoula, MT 59802, until 2:00 p.m. local time on Friday, ~~March 14~~ ***March 21***, 2025, and then publicly opened and read aloud via virtual Microsoft Teams Meeting. The Teams meeting access information will be electronically sent to all official plan holders one day prior to the bid opening.

2. Section 23 31 13 – METAL DUCTS

2.09 EXPANSION JOINTS/FLEXIBLE CONNECTIONS

B. Configuration

6. Extension: ~~6~~ $\frac{1}{2}$ "

7. Compression: ~~6~~ 6"

3. Section 27 11 16 – COMMUNICATIONS RACKS, FRAMES AND ENCLOSURES

Article 2.02:

Ortronics is an approved manufacturer for the wall mounted data rack and cable management

4. Section 27 15 13 – COMMUNICATIONS COPPER HORIZONTAL CABLING

Article 2.01.A:

Superior Essex is an approved manufacturer for the CAT6 cable

5. Section 27 15 23 – COMMUNICATIONS COPPER HORIZONTAL CABLING

Article 2.01.A:

Superior Essex and Ortronics are approved manufacturers for the fiber system.

DRAWINGS: (changes to the drawings are in blue font)

1. Sheet S-3 – Modifications to Detail 2 providing clarification and maximum spacing of wall vertical Control/Contraction Joints

2. Sheet S-10 – Modifications to the slab reinforcing steel to be consistent with Sheet S-9:

8" CONCRETE SLAB-ON-GRADE (COMPOST BAY).
REINF. WITH #5 AT 24" (MAX) O.C.E.W. 2" CLR
FROM TOP OF SLAB: OVER (2) LAYERS
POLYETHYLENE SHEETING

CLARIFICATIONS/INFORMATION:

1. The bid date is being pushed to March 21, 2025 in order to provide the Engineer time to further evaluate: the use of shrinkage-compensating concrete mix for the on-grade slabs; the ASR requirements for concrete aggregate, and; the pozzolan content called for in the Class B and Class C mixes in Part 2.07 of Specification Section 03 30 00. Discussions with concrete suppliers are ongoing and issues are expected to be resolved by 3/14/25.

ATTACHMENTS:

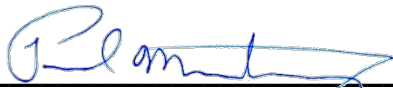
Attached for the bidder's information are the following:

- Exhibit A: Sheet S-3 – Structural Details
- Exhibit B: Sheet S-10 – Compost Bays

Please Remember To Acknowledge Receipt Of This Addendum when submitting bids through QuestCDN.

Issued By: ANDERSON-MONTGOMERY, 1064 N. WARREN, HELENA, MT 59601,

Paul Montgomery, P.E., Project Manager



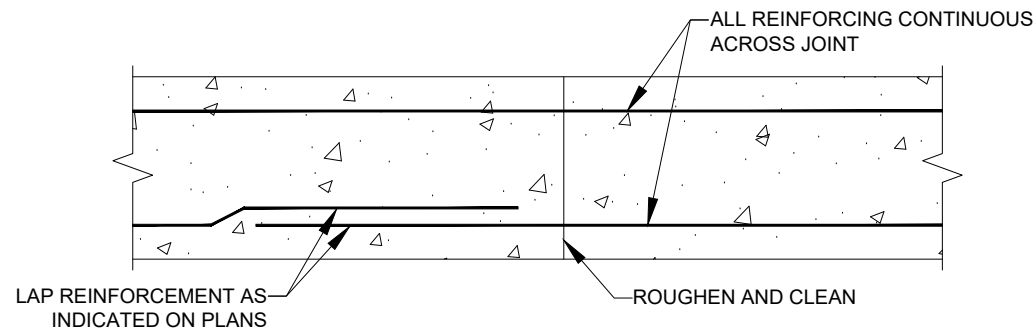
Office: (406)-449-3303, Fax (406)-449-3304
Paul@a-mce.com

END OF ADDENDUM NO. 3

EXHIBIT A

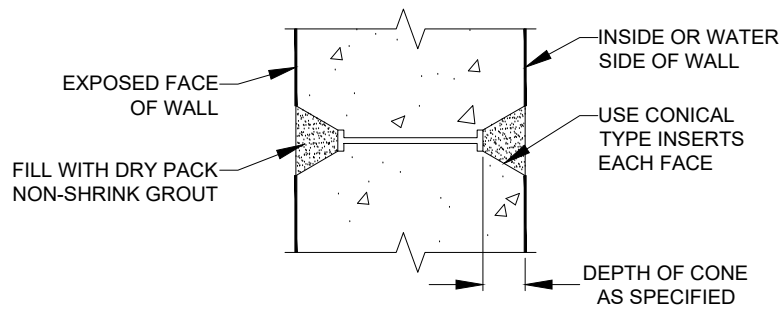
Revised Sheet S-3

X:\MISSOULA_COMPOST\DESIGN\DRAWINGS\Sheets\8 - Structural\Drawings\S-3, S-4, & S-5 Structural Details.dwg SAVED: 3/11/25 PRINTED: 3/11/25 BY: ADAM



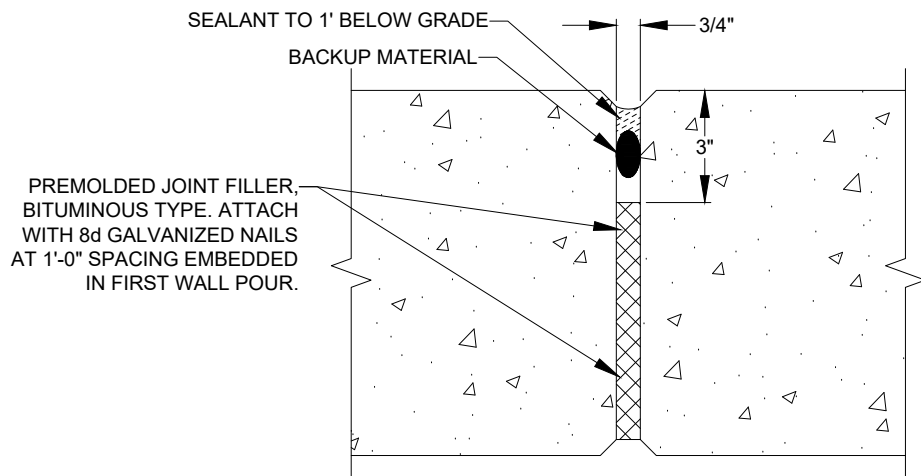
PLAN OR SECTION VIEW

Wall Construction Joint 1
NO SCALE



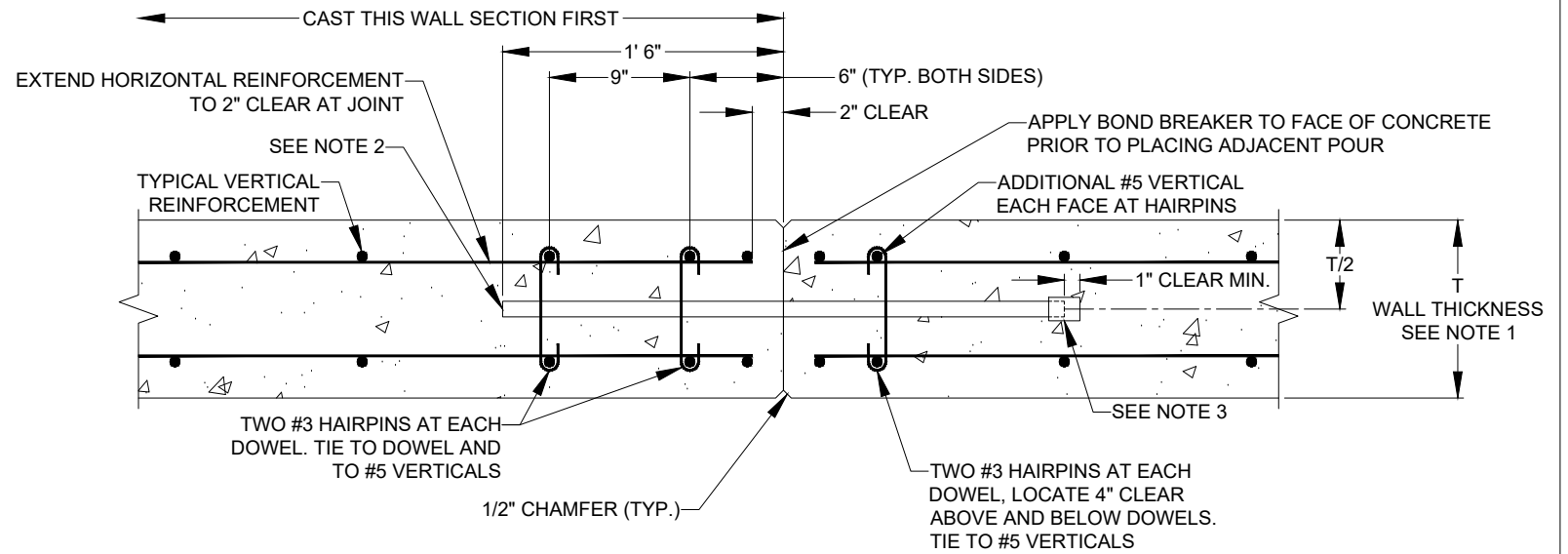
Form Snap-Tie Hole 3
NO SCALE

- NOTES:
- THE SPACING OF FORM TIES ON EXPOSED PORTIONS OF WALLS SHALL BE APPROXIMATELY EQUAL HORIZONTALLY AND VERTICALLY AND SHALL BE UNIFORM IN EACH DIRECTION.
 - DRY PACK METHOD SHALL BE AS SPECIFIED USING STEEL TOOLS.



PLAN VIEW

Wall Expansion Joint Treatment 4
NO SCALE

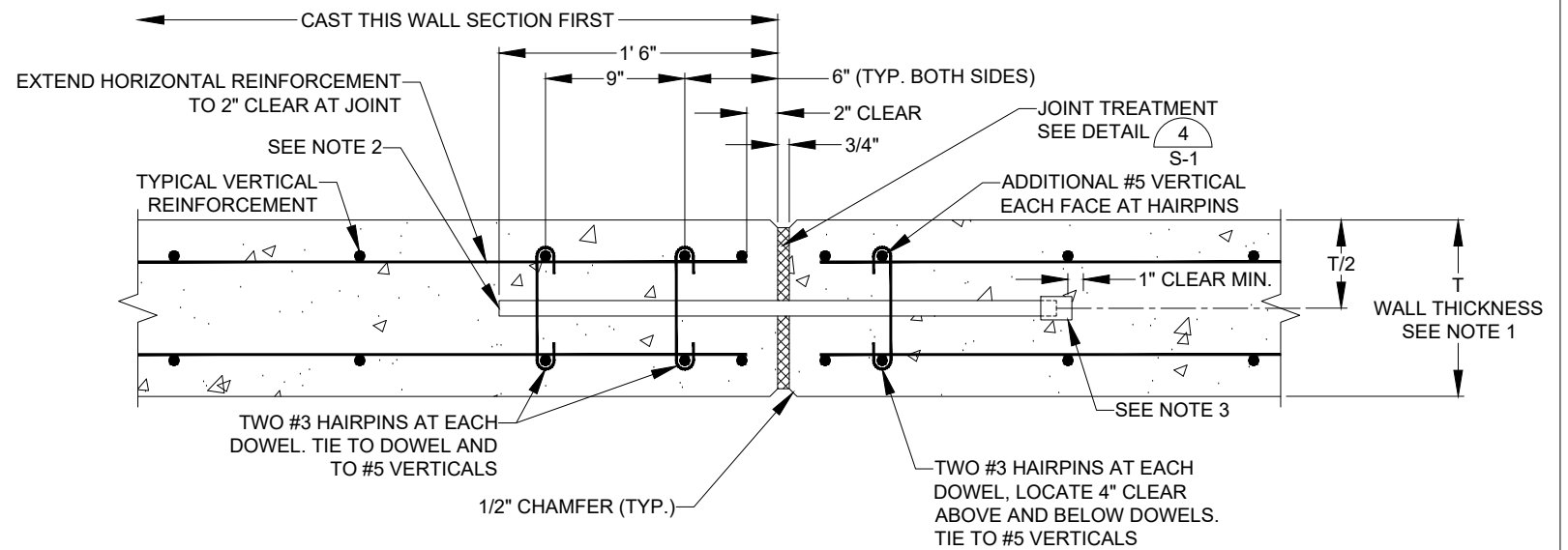


PLAN VIEW

Wall Vertical Control/Contraction Joint 2

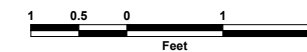


- NOTES:
1. FOR WALLS WITH THICKNESS OF 10" THROUGH 24"
 2. 1" DIA. x 3'-0" SMOOTH COATED BAR DOWELS. LOCATE AT 1'-0" MAX FROM T AND B OF WALL AND AT 2'-0" MAX SPACING. ALIGN AND TIE-IN-PLACE TO REINFORCEMENTS. COATING SHALL CONSIST OF A CORROSION RESISTANT COATING PLUS A LUBRICANT COATING AS SPECIFIED.
 3. 1" ID x 2" PLASTIC CAP WITH 1" POLYSTYRENE BETWEEN END OF DOWEL AND END CAP. TAP TO BAR FOR WATERTIGHT SEAL.
 4. MAXIMUM SPACING FOR WALL VERTICAL CONTROL/CONTRACTION JOINTS IS 20' (TYP.).

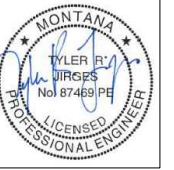


PLAN VIEW

Wall Vertical Expansion Joint 5



- NOTES:
1. FOR WALLS WITH THICKNESS OF 10" THROUGH 24"
 2. 1" DIA. x 3'-0" SMOOTH COATED BAR DOWELS. LOCATE AT 1'-0" MAX FROM T AND B OF WALL AND AT 2'-0" MAX SPACING. ALIGN AND TIE-IN-PLACE TO REINFORCEMENTS. COATING SHALL CONSIST OF A CORROSION RESISTANT COATING PLUS A LUBRICANT COATING AS SPECIFIED.
 3. 1" ID x 2" PLASTIC CAP WITH 1" POLYSTYRENE BETWEEN END OF DOWEL AND END CAP. TAP TO BAR FOR WATERTIGHT SEAL.



| Revision | Date | By |
|-----------|----------|----|
| 30% Draft | 8/1/24 | AE |
| 60% Draft | 11/18/24 | AE |
| 90% Draft | 1/31/25 | AE |
| Final | 2/14/25 | AE |
| Add. #3 | 3/11/25 | AE |

| | |
|-------------|--------------------|
| Revision | Addendum #3 |
| Plot Scale | 1:2 |
| Drawn By | A. Eckhart, P.E. |
| Drawn By | E. Swanson |
| Approved By | Matt Miller, P.E. |
| Checked By | Tyler Jirges, P.E. |
| Designed By | Tyler Jirges, P.E. |

Engineer

Anderson-Montgomery
CONSULTING ENGINEERS

1064 N. Warren
Helena, MT 59601
Phone (406) 449-3303

RPA

602 S. Ferguson Ave. STE 5
Bozeman, MT 59718
Phone (406) 284-2110

Owner

City Of
Missoula

Project Title

Garden City
Compost
Facility
Improvements

Sheet Title

Structural
Details

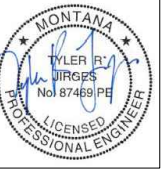
Sheet

S-3

EXHIBIT B

Revised Sheet S-10

NOTE:
SEE MECHANICAL
SHEETS FOR PIPING



| Revision | Date | By |
|-----------|----------|----|
| 30% Draft | 8/1/24 | AE |
| 60% Draft | 11/18/24 | AE |
| 90% Draft | 1/31/25 | AE |
| Final | 2/14/25 | AE |
| Add. #3 | 3/11/25 | AE |

| Revision | | |
|-------------|--------------------|--|
| Addendum #3 | | |
| Plot Scale | 1:2 | |
| Drawn By | A. Eckhart, P.E. | |
| Drawn By | E. Swanson | |
| Approved By | Matt Miller, P.E. | |
| Checked By | Tyler Jirges, P.E. | |
| Designed By | Tyler Jirges, P.E. | |

Engineer

1064 N. Warren
Helena, MT 59601
Phone (406) 449-3303

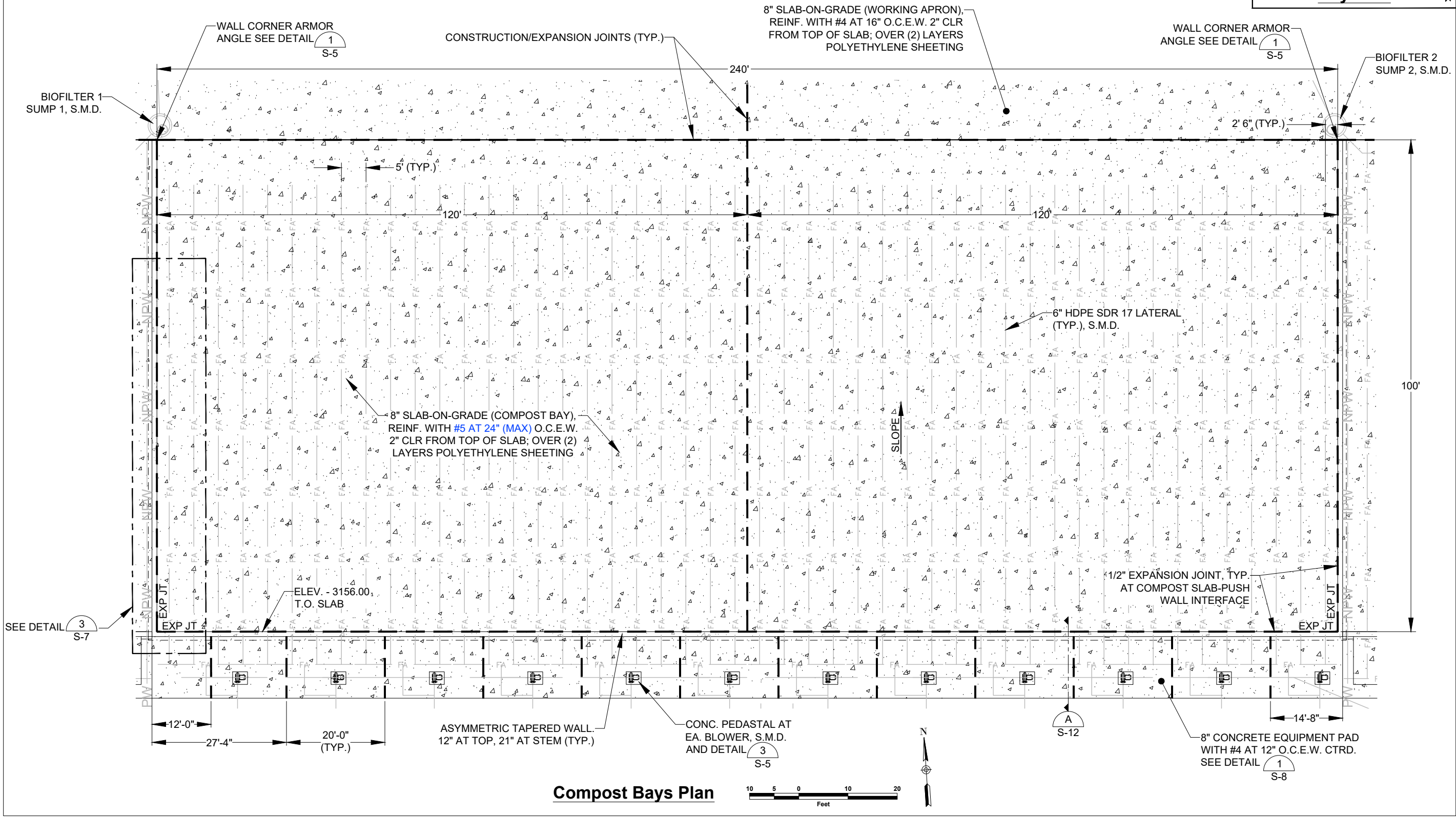
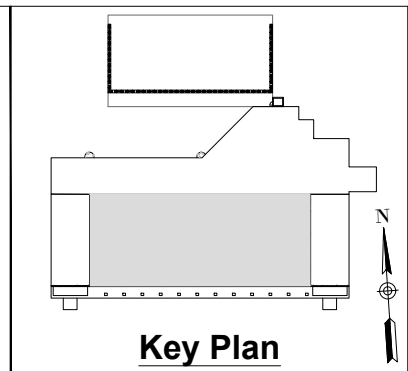
602 S. Ferguson Ave. STE 5
Bozeman, MT 59718
Phone (406) 284-2110

Owner
City Of Missoula

Project Title
Garden City Compost Facility Improvements

Sheet Title
Compost Bays

Sheet
S-10



X:\MISSOULA_COMPOST\DESIGN\DRAWINGS\Sheets\8 - Structural\Compost Bays Plan.dwg SAVED: 2/18/25 PRINTED: 3/11/25 BY: ADAM